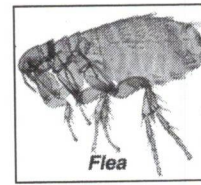


Flea Control



Flea Control

Flea control is very important to the health and well being of your pets. Flea bites can cause discomfort, irritation, and are responsible for a condition called flea bite hypersensitivity. Fleas can quickly infest your home with eggs and can bite humans if populations become heavy. Fleas develop from egg to adult in about two to four weeks. Eggs are laid on your pet, but quickly fall off into the environment. Carpeting is a favored habitat for fleas to mature and grow in. Fleas are also responsible for the transmission of tapeworm larvae to your pet.

How to detect fleas

Fleas leave behind flea dirt, which is dried blood and looks like dirt, but when you put it on white paper that is wet, it will turn a red, rust color. You will find flea dirt along the skin of your pet. Flea combs are great for finding live fleas and flea dirt on your pet. If you do not have a flea comb, run your hand against the grain of your pet's hair coat and watch for fleas down at the skin (look close, they are small). They are about the size of a gnat, and deep brown in color. Some pets become very uncomfortable and itchy from a few bites while others are fairly unaffected by their presence. If you have further questions, please ask a staff member at Heartland for further advice! We are happy to help!

Prevention Recommendations

1. Credelio Quattro Chewable All-in-One Prevention or Credelio Quattro are given every month for at least 4 months. (Canines Only)
2. Frontline topical Flea and Tick prevention every month for at least 4 months. (Safe for Dogs and Cats) You apply this treatment to a small area of skin at the shoulder blades, it is then absorbed into the pet's hair follicles and released with your pet's natural oils. Effective within 24 hours. **Both Credelio Quattro and Frontline are safe and reliable preventative and treatment for fleas and ticks.
3. Knockout Dog Spray: In infested areas, this spray kills fleas and prevents flea infestation for a full season. Read directions carefully.
4. Flea Shampoo may be used to kill the fleas that are on your pet, but will have no residual effect on fleas in the environment. Do not apply Frontline for 48 hours after bathing pet. Nexgard can be used at the same time.

*** Young animals, exotics, and wildlife have special needs. Please ask our staff for more information.*

*** Make sure to read labels on all products before using.*

Tips on Treating Your Home

1. VACUUM frequently (ideally every 2 days) to remove a portion of the egg larva and pupal populations from your carpeting. Make sure you discard your vacuum bags often.
*** Suggestions: spray new vacuum bags with flea spray before using them.*
2. WASH all bedding your pets go on (including yours), and dry in the dryer if instructions allow.
3. Knockout Area Spray: This is the insect growth regulating spray we carry for carpets and furniture-kills fleas and prevents infestations for a full season. . Read directions carefully before using. When treating your home, pay special attention to your pet's rest and play areas.